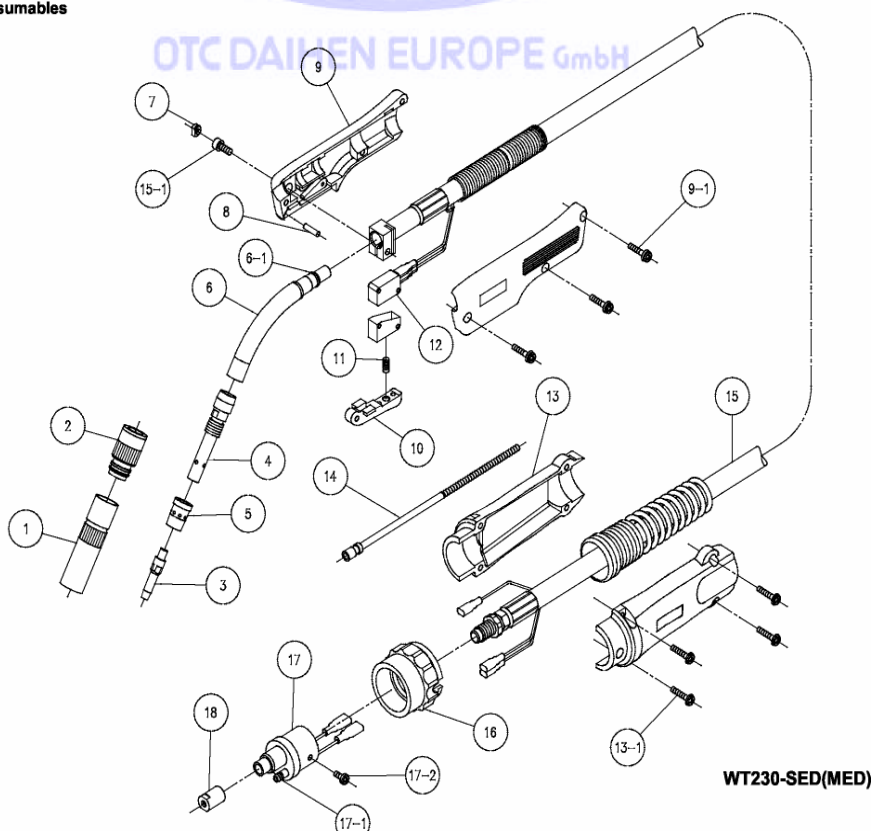


Standard partlist for WT230 – SED(MED)

Pos	article-No.	description	number	category	remark
	WT230-SED	welding torch	1	WM25	3,0 mtr. Cable lenght
	WT230-MED	welding torch	1	WM25	4,5 mtr. Cable lenght
1*	U608N02	Nozzle	1	WP32	I.D. 16 mm
2*	U4167L00	Insulator	1	WP32	
3*	K980C32	Contact tip	1	WP32	
4*	U4170G03	Tip body	1	WP32	
5*	U4167G02	Orifice	1	WP32	
6*	U5344B00	Torch body	1	WP32	
6,1	3574-001	O-ring (S9)	1	WP35	
7	U5341G01	Cap	1	WP35	
8	100-0311	Parallel pin	1	WP35	
9	U5030G00	Handle	1	WP35	Incl. screws
9,1	100-0307	Screw for handle	3		M4 x 18
10	U5030E01	Trigger	1	WP35	
11	U2853C04	Spring	1	WP35	
12	U4167T00	Micro switch	1	WP35	with cover
13	U5035K00	Cable support	1	WP35	Incl. screws
13,1	100-0306	Screw for cable support	4		M4 x 16
14*	U4170H02	Liner, 3,0 mtr	1	WP32	0.9 - 1.2 mm
	U4535G01	Liner, 4.5 mtr.	1	WP32	1.0 - 1.2 mm
15	U5344D00	Power cable, 3,0 mtr. 1		WP35	Incl. support spring
	U5345D00	Power cable, 4,5 mtr.	1	WP35	Incl. support spring
15,1	100-0309	Socket screw	1		M5 x 12
16	U5685N00	Adaptor nut	1	WP35	
17	U5779E00	Adaptor	1	WP35	Euro connection
17,1	3573-002	O - ring		1 WP35	
17,2	100-0297	Screw	1		M4 x 8
18	U5779E01	Liner nut	1	WP35	

*=consumables

OTC DAIHEN EUROPE GmbH



*=consumables

WT230-SED(MED)